



# HOUSE & LAND PACKAGE

## The GLENDELLA \$377,890



LOT AREA: 300sqm



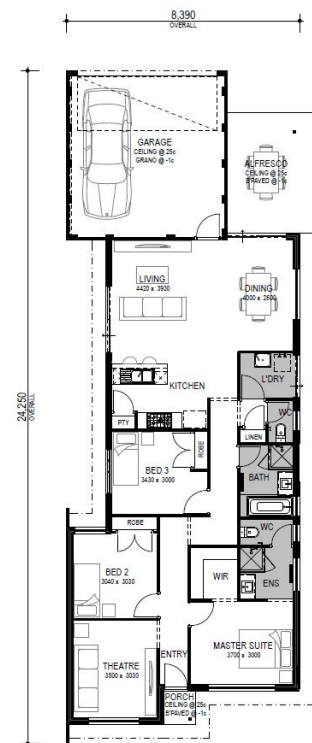
LOT 637

### HOUSE FEATURES

- The Glendella is the ideal family home with open living areas and clever design.
- Master suite with generous walk in robe and ensuite.
- Open plan living space with alfresco
- 900mm Italian appliances
- Choice of six elevations
- 24 week Guaranteed Construction Timeline

### LAND FEATURES

- Suitable for a 10m homesite
- Based on a land price of \$220,000.
- Waterfront Park Stage 1 complete.
- Direct Beach access.
- Woolworths to join future Coastal Village Centre, plus over 17 speciality retailers & dining.



Peet Sales Consultant: Stefan Wheeler on 9246 7007 or 0447 220 839

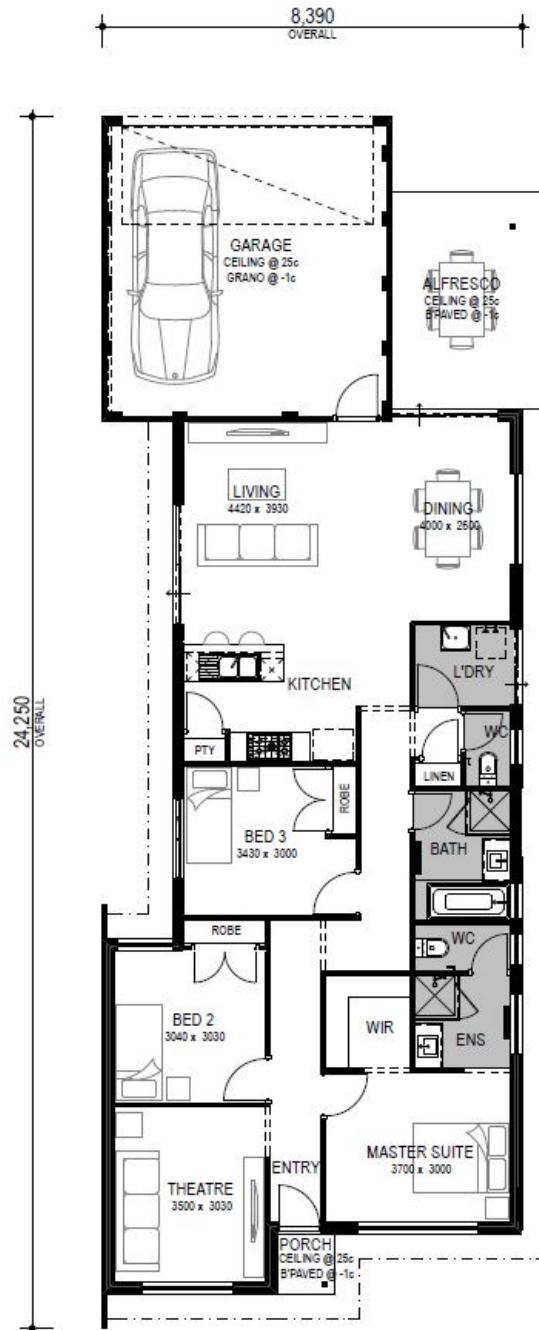
Go Homes Consultant: Roy Roex on 0457 125 755

[shorehaven.com.au](http://shorehaven.com.au)

**PEET**

# HOUSE & LAND PACKAGE

## The GLENDELLA \$377,890



The information shown on this material has been prepared with care, however it is subject to change and cannot form part of any offer or contract other than to identify the proposed package. Whilst every reasonable care has been taken in preparing this information, the Seller or its representatives and agent cannot be held responsible for any inaccuracies. Interested parties must be sure to undertake their own independent enquiries. Untitled lot information is subject to survey and Titles Office approval. Prices are subject to change without notice. Prices and lot information correct as at 29.01.15

