



# HOUSE & LAND PACKAGE

## The Aurora \$404,100



LOT AREA: 320sqm  3  2  2

LOT 1520

### HOUSE FEATURES

- The Aurora is a spacious family home with premium fittings and a clever design
- Master suite with generous walk in robe and ensuite and large walk in robe
- Open plan living space with alfresco
- Separate large cinema room
- Spacious main bathroom
- Built in robes to bedroom two and three

### LAND FEATURES

- Suitable for a 10m homesite
- Based on a land price of \$219,000
- Located just 600m from the beach, with direct beach access
- Future Coastal Village Centre coming soon, featuring over 17 speciality retailers & dining
- Plenty of other entertainment options in the local area



Peet Sales Consultant: Stefan Wheeler on 9246 7007 or 0447 220 839

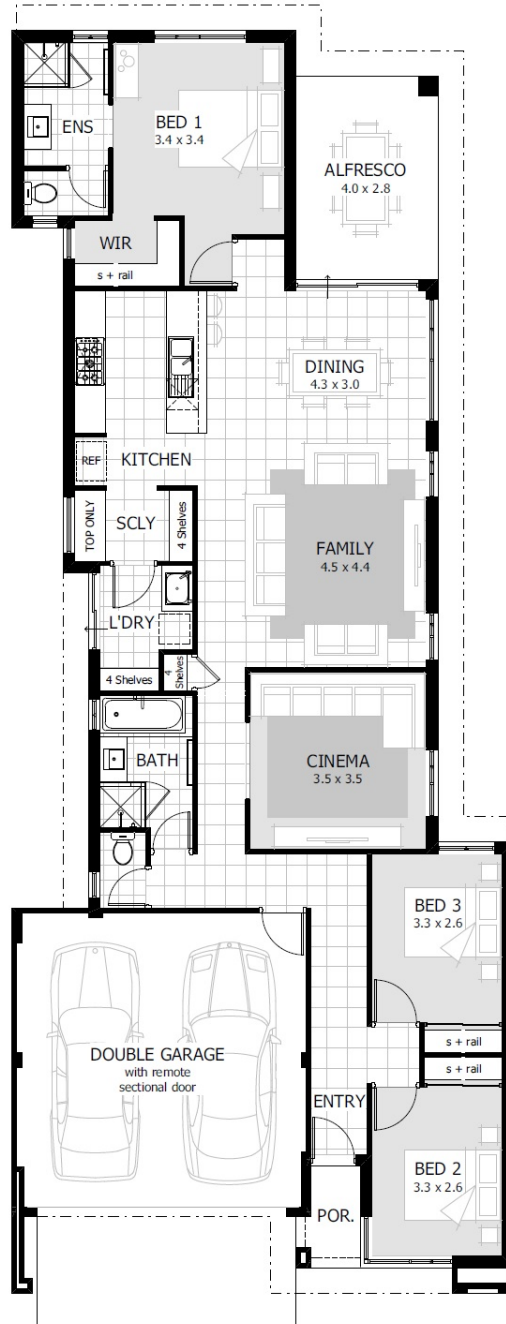
Celebrations Consultant: Rohan Armitage on 0435 357 757

[shorehaven.com.au](http://shorehaven.com.au)

**PEET**

# HOUSE & LAND PACKAGE

The Aurora \$404,100



The information shown on this material has been prepared with care, however it is subject to change and cannot form part of any offer or contract other than to identify the proposed package. Whilst every reasonable care has been taken in preparing this information, the Seller or its representatives and agent cannot be held responsible for any inaccuracies. Interested parties must be sure to undertake their own independent enquiries. Untitled lot information is subject to survey and Titles Office approval. Prices are subject to change without notice. Prices and lot information correct as at 29.01.15

