



HOUSE & LAND PACKAGE

THE CLAYFIELD FROM \$324,590*



LOT AREA: 250sqm  3  2  2

LOT 1590

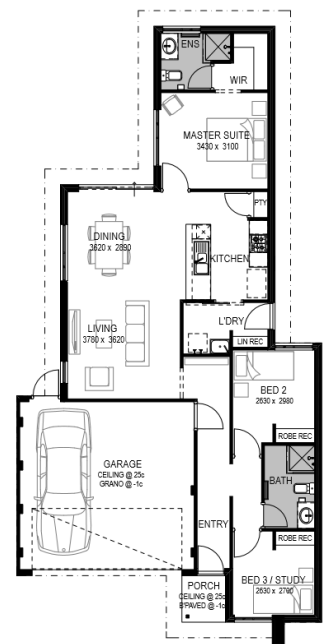
PACKAGE INCLUDES

The Clayfield by WA Housing Centre is ideal for space conscious buyers, with an innovative floorplan that lets you maximise the most of every meter.

The large master suite at the rear of the home gives you the luxury of a relaxing and private retreat, with plenty of room for socializing in the open-plan living areas. This package is also available on lots 1590 and 1594.

HOUSE FEATURES

- Access from garage
- Garage under main roof
- Master bedroom with private ensuite
- Parent's retreat
- Open plan kitchen, living & dining area
- Site works allowance of \$11,100 included



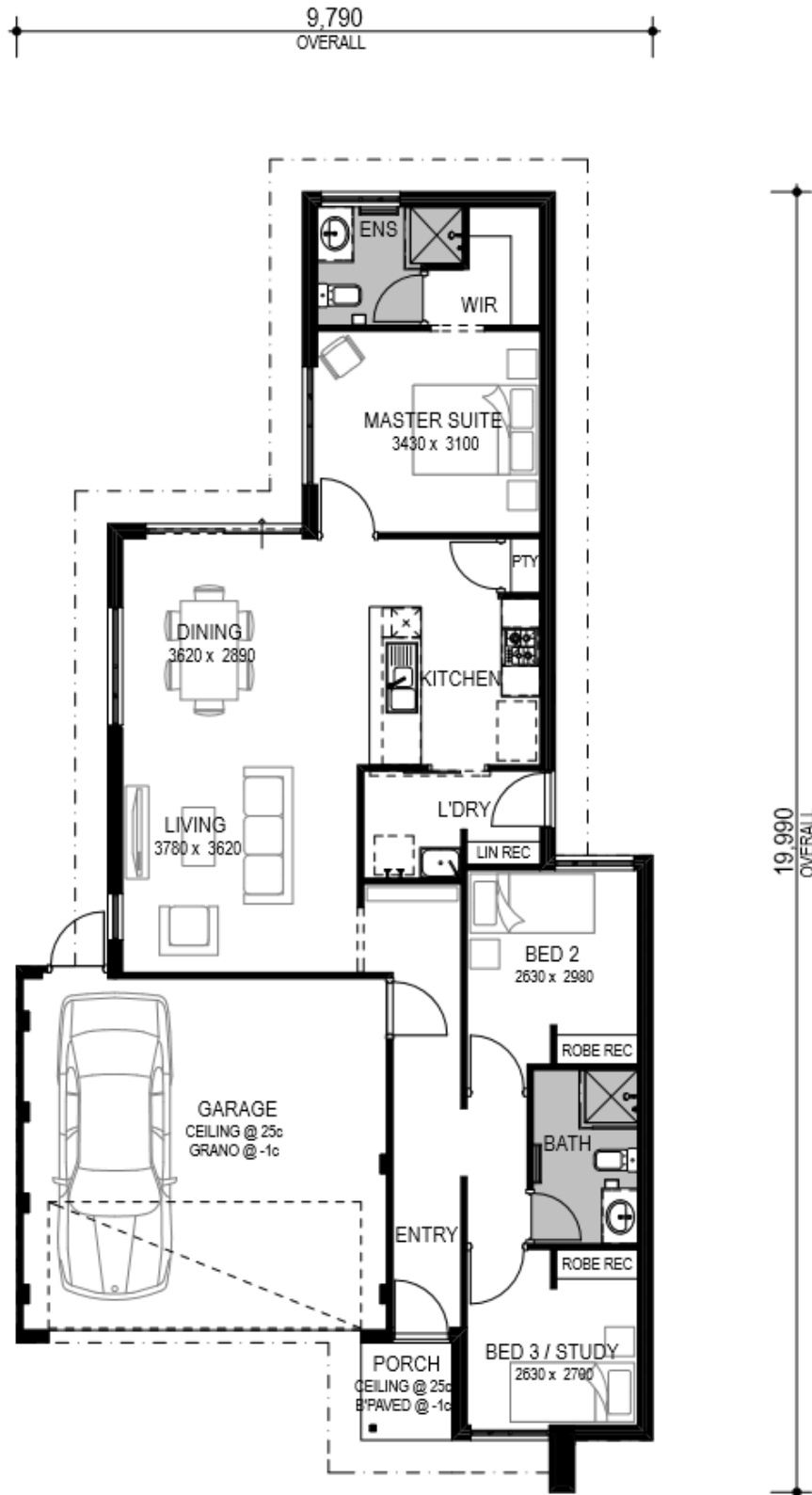
* Price is down to \$309,590, inclusive of the \$15,000 First Home Owners Grant.

Contact Sales Representative Stefan Wheeler on (08) 9246 7007
or WA Housing Centre Zane Hendry on 0450 739 701
www.shorehaven.com.au

PEET

HOUSE & LAND PACKAGE

THE CLAYFIELD – BUCHANAN AVENUE, LOT 1590



The information shown on this material has been prepared with care, however it is subject to change and cannot form part of any offer or contract other than to identify the proposed package. Whilst every reasonable care has been taken in preparing this information, the Seller or its representatives and agent cannot be held responsible for any inaccuracies. Interested parties must be sure to undertake their own independent enquiries. Untitled lot information is subject to survey and Titles Office approval. Prices are subject to change without notice. Prices and lot information correct as at 02.06.2017.

